



ACCESSORIES

SOPRASEAL STICK PRIMER[®] SPRAYED

WALLS



APPLICATION GUIDE

INTRODUCTION

SOPRASEAL STICK PRIMER is specifically designed to enhance the adhesion of self-adhesive Sopraseal membranes on walls. Previously applied only by brush or roller, this primer can now be applied by **spraying**.

EQUIPMENTS



Sopraseal Stick Primer
19 L (5 gal. US)
code: 37782



Spray gun with 9.5 mm nozzle
Lemmer A-908
Conventional Spray gun



Pump
Lemmer RP-1202
with hose



Compressor 8 CFM minimum



Cleaner
(mineral spirits, varsol
or xylène)



SOPREMA.CA

1 877 MAMMOUTH

PREPARATION OF THE EQUIPMENT

Agitate the pail of SOPRASEAL STICK PRIMER to mix the contents.

Open the pail lid with a flat screwdriver.

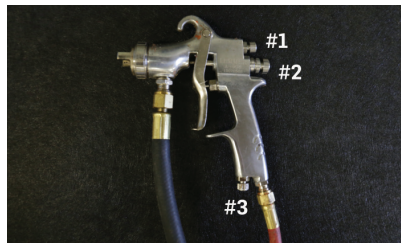
Before connecting the air inlet, set the pump in the pail and screw the pump plate to the top of the pail. Connect the spray gun to the two pump hoses.



Connect the pump to the air compressor; the pump will then start automatically. Adjust the air pressure to **60 psi** on the right regulator. The left regulator indicates the air pressure available for the spray gun.

Adjust the three valves on the spray gun. Valve **#1** controls the width of the spray, valve **#2** controls the flow rate of the product and valve **#3** activates or deactivates the air intake.

Once the adjustments of the gun and pump have been done, purge the hoses to drain the cleaner from the previous use into a container.



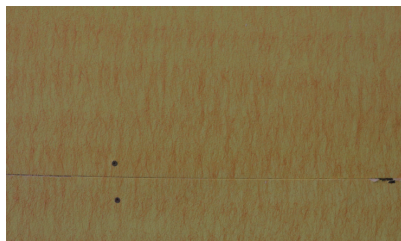
APPLICATION OF PRIMER

Place the spray gun so the spray is perpendicular to the substrate. The recommended spray width is **6 to 8 inches (150 to 203 mm)**.

Maintain a distance of **6 to 8 inches (150 to 203 mm)** between the substrate and the spray gun to prevent the product from drying before reaching the substrate. The movement of the spray gun must be maintained at a constant speed while spraying.

The spraying technique consists of making crossed passes to achieve uniform wetting of the primer on the substrate.

Avoid spraying too much product on the substrate.



CLEANING THE EQUIPMENT

Once application of the primer is finished, close the spray gun air inlet to have a non-atomized jet. Leave the compressor running to activate the pump when cleaning.

Unscrew the pump plate from the pail and place the pump in a container previously filled with 3 litres of mineral spirits for cleaning.

Drain the remaining product from the pump and hoses into another container, until the jet no longer contains any primer. It is not necessary to purge the hoses after cleaning; this can be done before the next use.



Discard the used mineral spirits after use, since it cannot be reused.

If you have any questions about this product or its installation, please contact your SOPREMA representative.